



Noise Monitoring Result

Day Time (0700 - 1900hrs on normal weekdays)

Location: M1a - Footbridge at EX-Wanchai Harbour Road Sports Centre

Date	Time	Weather	Measurement Noise Level			Baseline Level	Construction Noise Level	Limit Level
			Leq	L10	L90	Leq	Leq	Leq
Unit: dB(A), (30-min)								
27/12/18	16:55	Cloudy	71.8	73.7	69.4	72	72	75
4/1/18	13:00	Cloudy	74.7	77.4	71.7	72	71	75
8/1/19	16:45	Cloudy	72.2	74.5	68.3	72	72	75
14/1/19	13:00	Cloudy	72.1	74.0	68.5	72	72	75
25/1/19	13:05	Fine	74.3	77.0	73.0	72	70	75



Noise Monitoring Result

Day Time (0700 - 1900hrs on normal weekdays)

Location: M2b - Noon-day gun area

Date	Time	Weather	Measurement Noise Level			Baseline Level	Construction Noise Level	Limit Level
			Leq	L10	L90	Leq	Leq	Leq
Unit: dB(A), (30-min)								
28/12/18	11:00	Fine	69.1	70.2	65.7	68	64	75
4/1/19	13:40	Cloudy	63.4	65.7	60.5	68	63	75
7/1/19	10:20	Cloudy	68.2	69.7	65.9	68	59	75
14/1/19	11:15	Cloudy	66.8	68.0	64.5	68	67	75
25/1/19	13:55	Fine	67.4	69.0	66.0	68	67	75

Location: M3a - Tung Lo Wan Fire Station

Date	Time	Weather	Measurement Noise Level			Baseline Level	Construction Noise Level	Limit Level
			Leq	L10	L90	Leq	Leq	Leq
Unit: dB(A), (30-min)								
27/12/18	9:14	Cloudy	66.8	69.1	65.6	69	67	75
2/1/19	09:40	Cloudy	65.8	67.2	64.1	69	66	75
8/1/19	11:10	Cloudy	66.5	67.7	64.9	69	67	75
17/1/19	09:15	Fine	65.7	68.3	63.5	69	66	75
22/1/19	14:00	Fine	65.2	67.0	63.0	69	65	75



Noise Monitoring Result

Day Time (0700 - 1900hrs on normal weekdays)

Location: M4b - Victoria Centre

Date	Time	Weather	Measurement Noise Level			Baseline Noise Level	Construction Noise Level	Limit Level
			Leq	L10	L90	Leq	Leq	Leq
Unit: dB(A), (30min)								
27/12/18	8:35	Cloudy	66.2	67.0	63.3	67	66	75
2/1/18	08:40	Cloudy	66.2	67.6	63.1	67	66	75
8/1/19	10:35	Cloudy	71.9	74.7	65.0	67	70	75
17/1/19	08:37	Fine	66.7	68.0	62.0	67	67	75
22/1/19	14:55	Fine	70.0	71.0	63.5	67	67	75

Location: M5b - City Garden

Date	Time	Weather	Measurement Noise Level			Baseline Level	Construction Noise Level	Limit Level
			Leq	L10	L90	Leq	Leq	Leq
Unit: dB(A), (30min)								
27/12/18	10:00	Cloudy	69.1	70.4	67.4	68	63	75
2/1/19	10:35	Cloudy	70.3	72.5	69.2	68	66	75
8/1/19	09:00	Cloudy	70.5	73.0	67.3	68	67	75
17/1/19	10:05	Fine	69.4	71.7	67.3	68	64	75
22/1/19	16:05	Fine	74.9	76.0	71.0	68	74	75

Location: M6 - HK Baptist Church Henrietta Secondary School

Date	Time	Weather	Measurement Noise Level			Baseline Level	Construction Noise Level	Limit Level
			Leq	L10	L90	Leq	Leq	Leq
Unit: dB(A), (30-min)								
27/12/18	10:37	Cloudy	69.3	70.7	67.4	71	69	70
2/1/19	11:10	Cloudy	68.7	69.6	67.3	71	69	70
8/1/19	9:38	Cloudy	67.2	68.7	65.1	71	67	70
18/1/19	10:50	Fine	67.8	69.0	66.0	71	68	65
25/1/19	11:20	Fine	68.9	69.5	67.0	71	69	65



Noise Monitoring Result

Day Time (0700 - 1900hrs on normal weekdays)

Location: M7e - International Finance Centre (Eastern End of Podium) (Reference Station)

Date	Time	Weather	Measurement Noise Level			Baseline Level	Construction Noise Level	Limit Level
			Leq	L10	L90	Leq	Leq	Leq
Unit: dB(A), (30-min)								
27/12/18	13:00	Fine	69.1	70.8	67.5	67	65	N/A
31/12/18	14:00	Fine	68.6	71.2	64.7	67	64	N/A
8/1/19	14:25	Cloudy	66.6	68.8	63.8	67	67	N/A
15/1/19	13:09	Cloudy	68.4	70.6	65.9	67	63	N/A
24/1/19	14:37	Fine	71.4	73.0	70.0	67	70	N/A

Location: M7w - International Finance Centre (Western End of Podium)

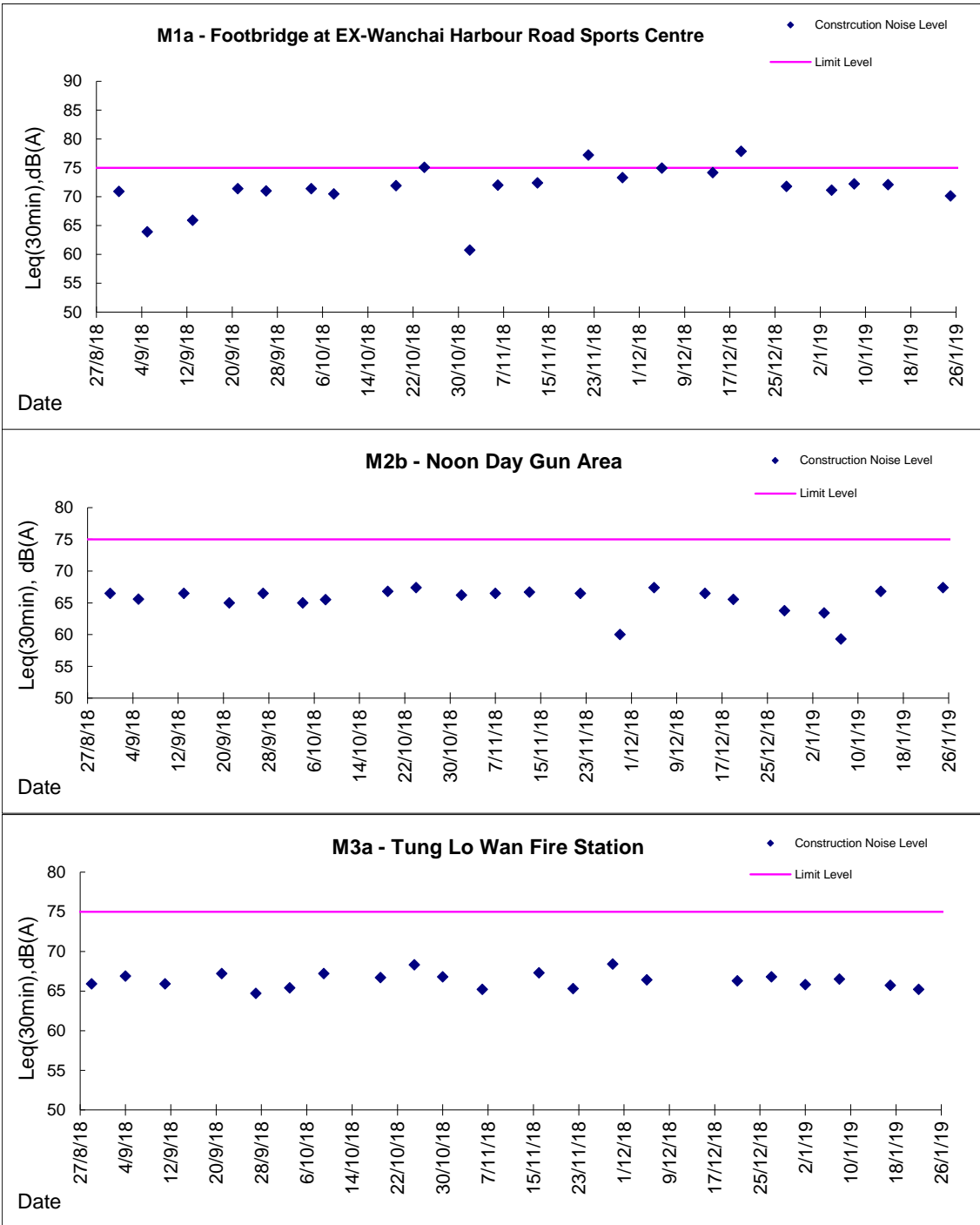
Date	Time	Weather	Measurement Noise Level			Baseline Level	Construction Noise Level	Limit Level
			Leq	L10	L90	Leq	Leq	Leq
Unit: dB(A), (30-min)								
27/12/18	13:35	Fine	67.1	68.3	64.6	69	67	75
31/12/18	14:35	Fine	66.5	68.6	62.7	69	67	75
8/1/19	15:00	Cloudy	64.4	67.2	61.7	69	64	75
15/1/19	13:44	Cloudy	64.7	66.6	62.3	69	65	75
24/1/19	13:53	Fine	73.6	75.0	72.4	69	72	75

Location: M8 - City Hall

Date	Time	Weather	Measurement Noise Level			Baseline Level	Construction Noise Level	Limit Level
			Leq	L10	L90	Leq	Leq	Leq
Unit: dB(A), (30-min)								
27/12/18	14:20	Fine	64.3	65.8	61.5	64	53	70
31/12/18	14:17	Fine	64.0	65.9	61.2	64	64	70
8/1/19	13:30	Cloudy	61.4	63.4	58.8	64	61	70
15/1/19	14:34	Cloudy	62.9	65.0	58.5	64	63	70
24/1/19	15:10	Fine	68.9	70.0	67.0	64	67	70



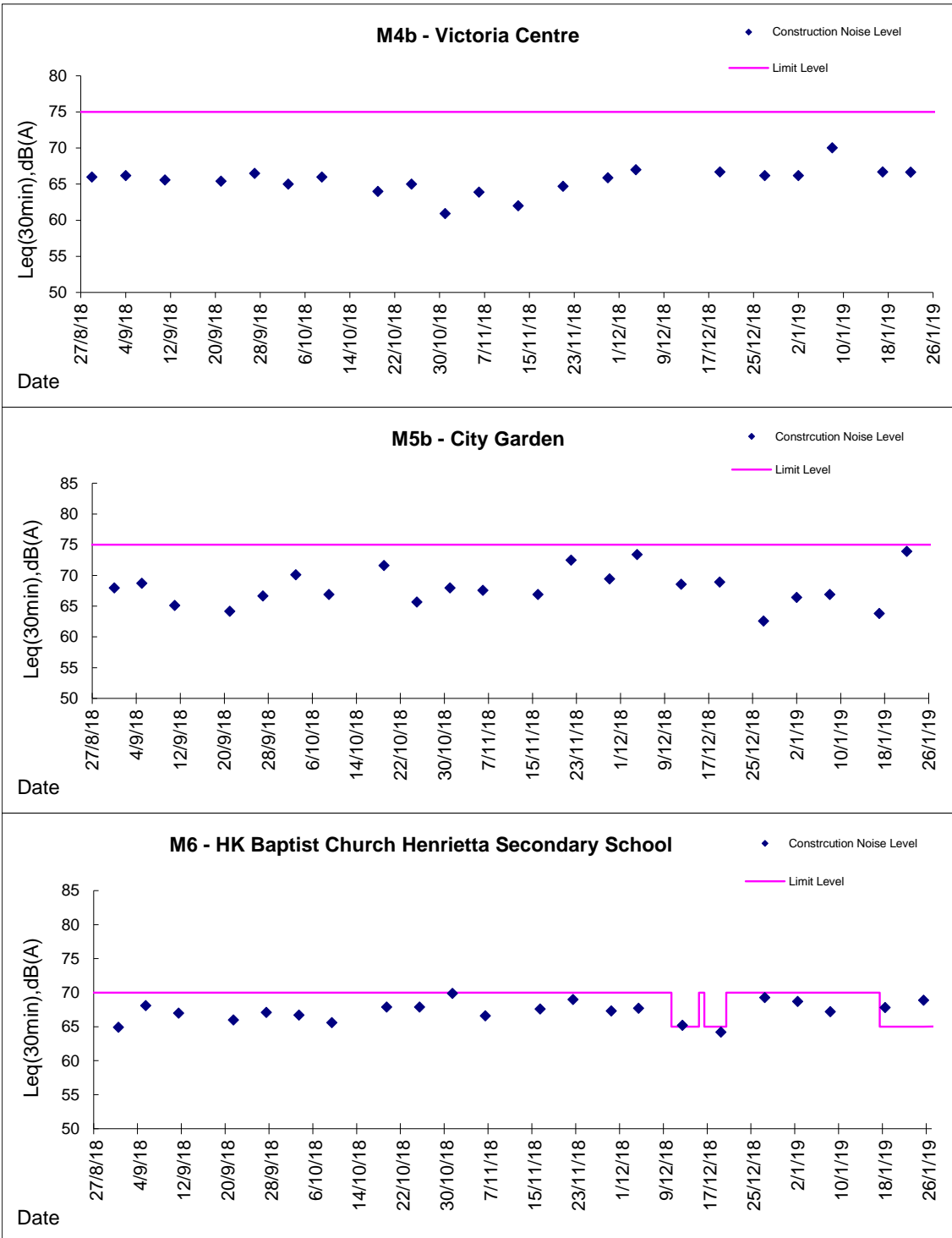
Graphic Presentation of Noise Monitoring Result
Day Time (0700 - 1900hrs on normal weekdays)





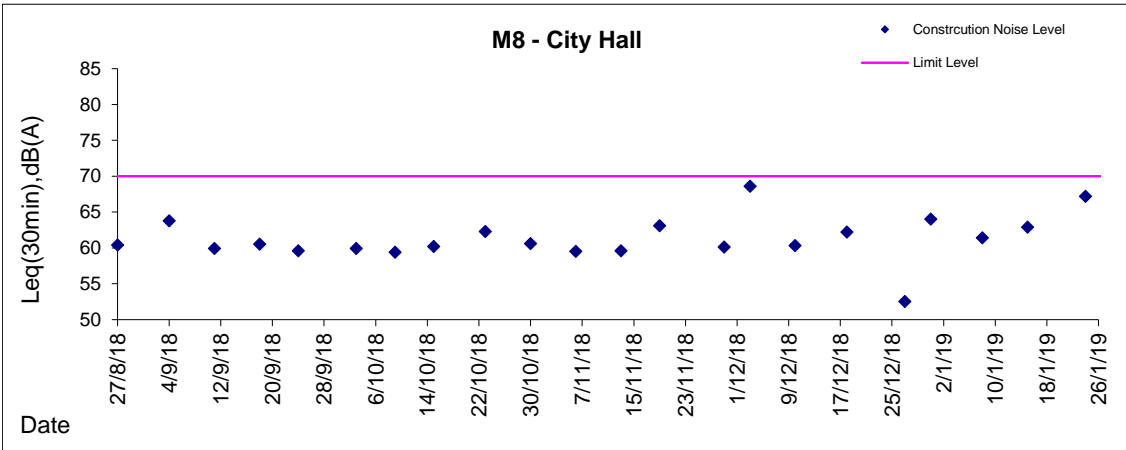
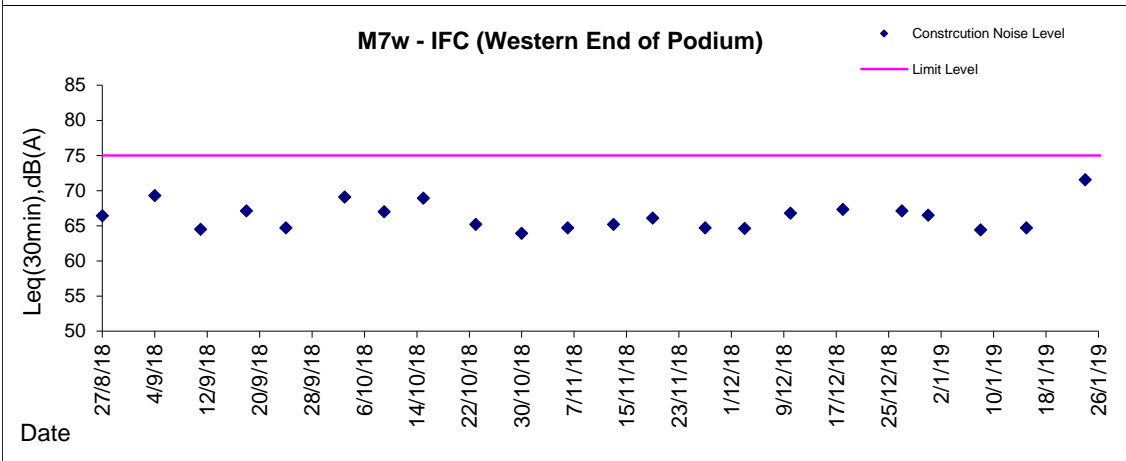
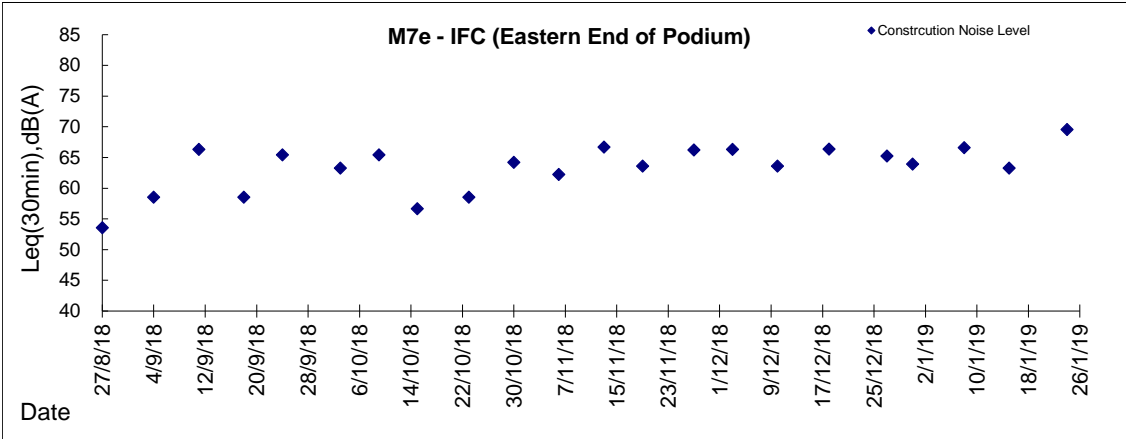
Graphic Presentation of Noise Monitoring Result

Day Time (0700 - 1900hrs on normal weekdays)



Graphic Presentation of Noise Monitoring Result

Day Time (0700 - 1900hrs on normal weekdays)



* Remark: M7e - IFC (Eastern End of Podium) is a reference monitoring station